

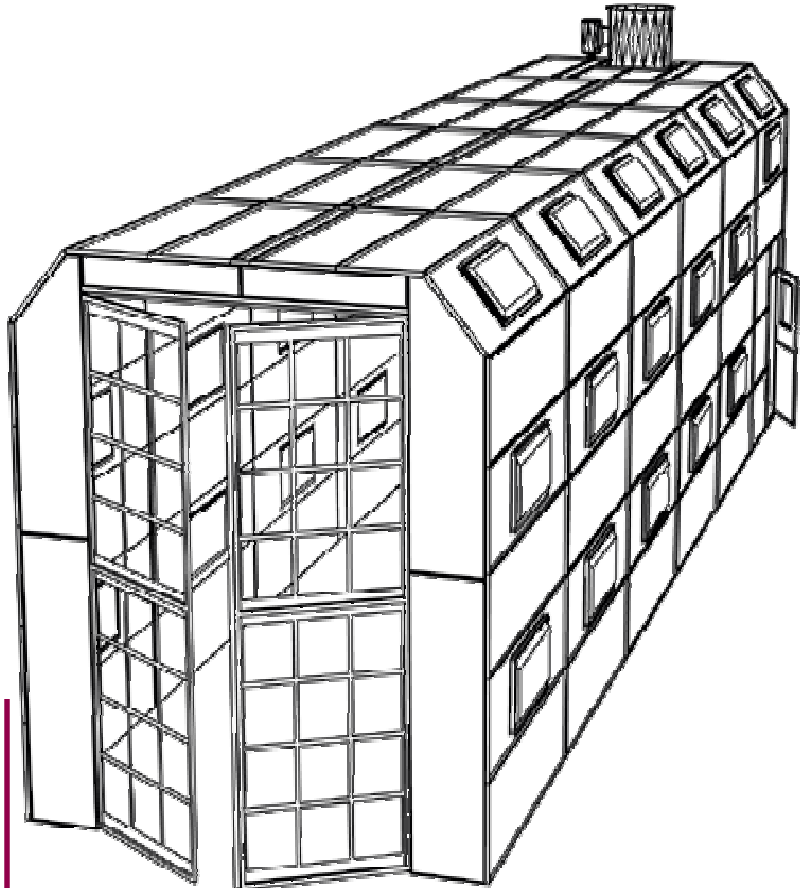
## Truck Cross Draft Booth

SILVER EDITION BOOTHS are for the economy minded buyer. Prices do not include installation or permits.

Visit our website [www.skbowling.com](http://www.skbowling.com) for our complete product line. We also manufacture the [Paint Perfect Spray Booth Systems](#) line of premium quality spray booths.

### SPECIFICATIONS

16' wide x (30'-60') long x 16' high  
 15' high x 11' wide entrance doors  
 42" fan and \*\*3 phase-5 hp motor with belts, pulleys and sheave  
 All 18 gauge steel construction panels  
 All hardware, nuts and bolts and sealants  
 (28) 20" x 20" intake and (36) 20" x 20" exhaust filters and filter grids  
 (24) 4-tube light fixtures with clear tempered glass  
 1 personnel door  
 Draft gauge  
 Assembly instructions/permit package



### *Model S/E CDTR 1650-16*

All UL and ETL listed components are used. Assembly Instructions are included. Permit packages are available.

Installation and Permits are the responsibility of the purchaser. Booths are manufactured to NFPA33, OSHA, NEC and BOCA guidelines, but nothing is implied or expressed that precludes them from being installed to all state and local building codes.

### Optional Features

42" x 8' exhaust package  
 \*\*Single phase motor  
 Additional personnel door  
 Add bi-fold doors  
 Drive-through doors  
 Bananza® 2 million BTU gas air make up  
 Horizontal unit with control panel or  
 Vertical unit and stand with control panel  
 Air make up intake tower  
 Fire Suppression (Install at additional charge)  
 Crating and Handling\* (\*required)  
 Freight from factory to jobsite\* (\*required)  
 White Coated

30' Long Booth Model 1630-16  
 40' Long Booth Model 1640-16  
 50' Long Booth Model 1650-16  
 60' Long Booth Model 1660-16

Silver Edition Booths Distributed By:

**PAINT PERFECT**  
**SPRAY BOOTH SYSTEMS**

S.K. BOWLING COMPANY 4475 Technology Dr. Wilson, NC 27896  
 252-243-2383 phone 252-237-5289 fax

